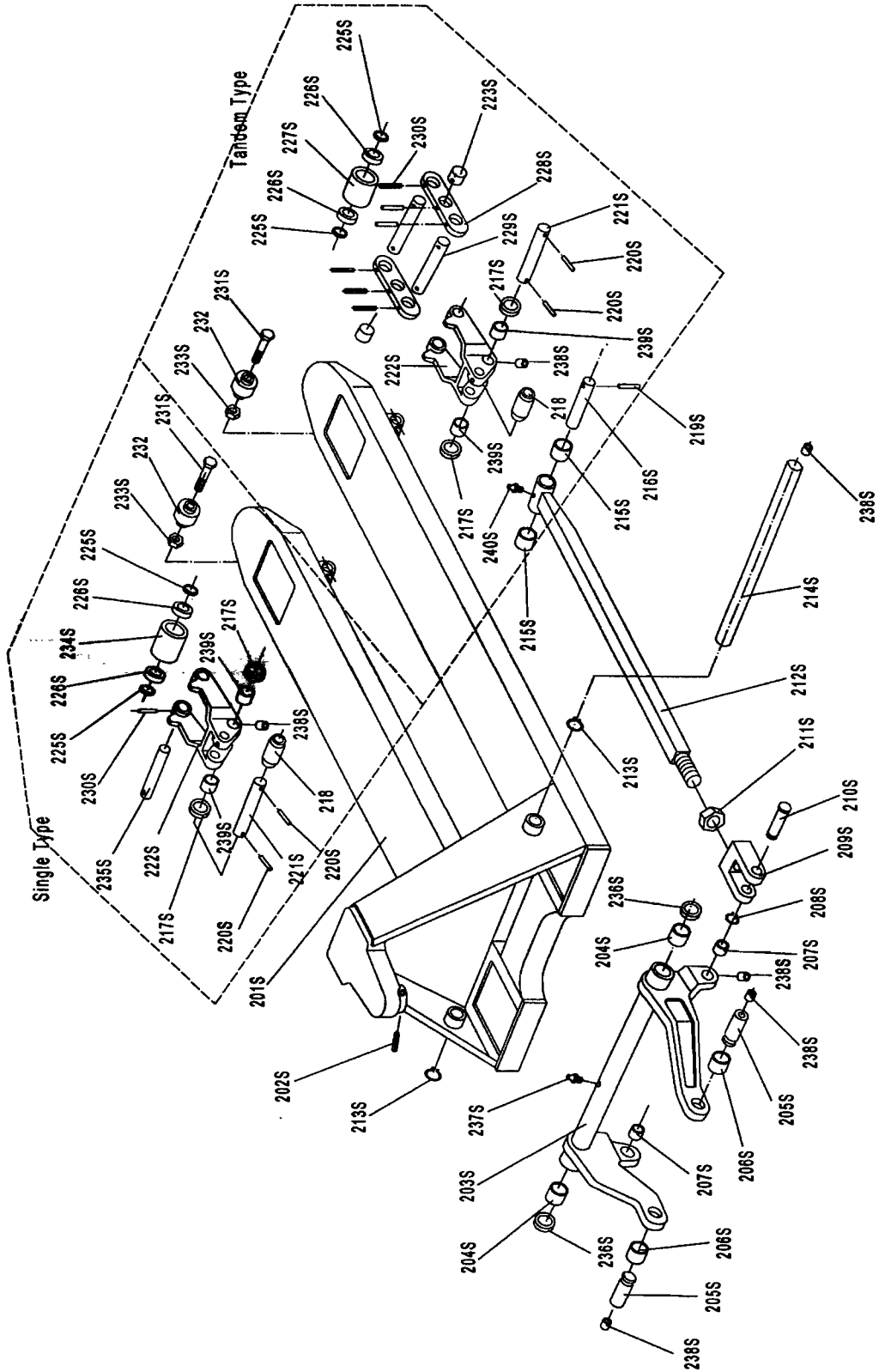


Handle Parts List

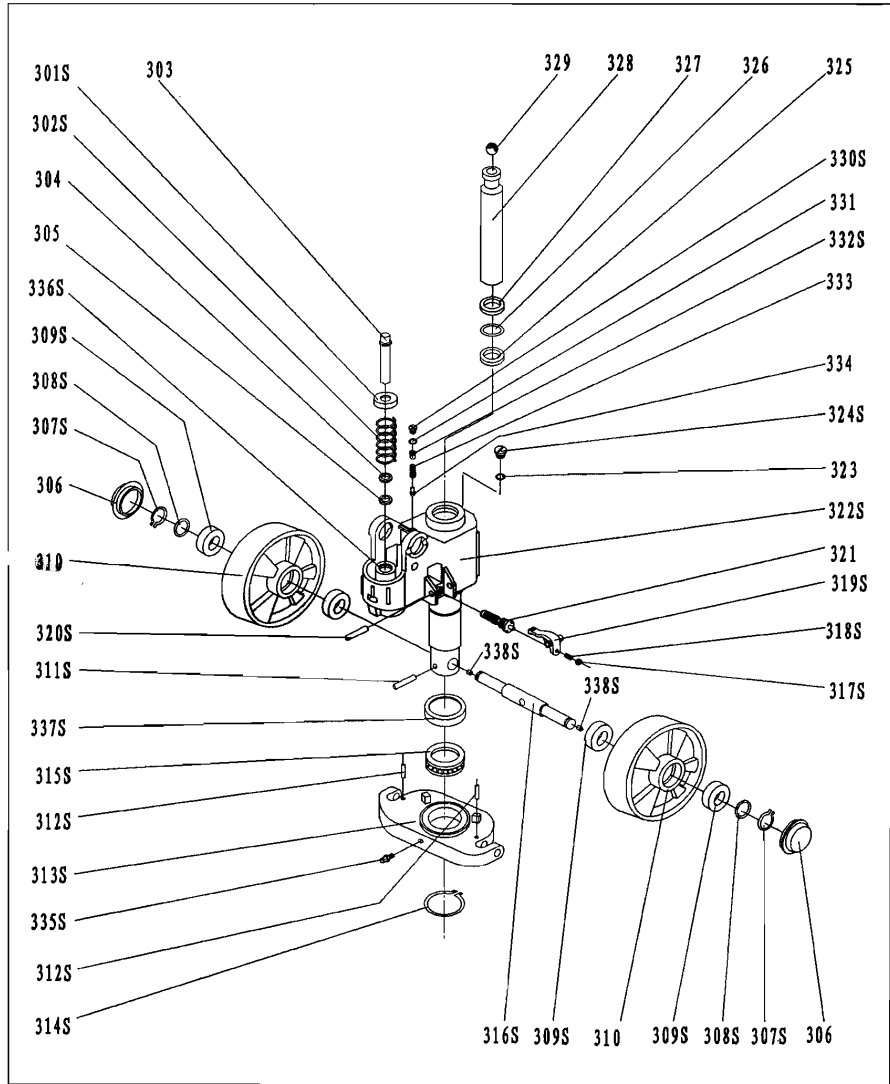
No.	Description	Qty.	Material Make-Up	
			Type 304	Type 316
101S	Release Rod	1	304	316
102S	Chain	1	304	304
103S	Adjusting Bolt	1	304	316
104S	Adjusting Nut	1	304	316
105S	Axle with Hole	1	304	316
106S	Elastic Pin	2	304	304
107S	Bushing	2	304	304
108S	Roller Pin	1	304	316
109S	Pressure Roller	1	304	316
109AS	Bushing	1	304	304
110S	Draw-bar	1	304	316
111	Stop Rubber	1	Rubber	Rubber
112S	Elastic Pin	1	304	304
113S	Blade Spring	1	3Cr13	3Cr13
114S	Spring	1	3Cr13	3Cr13
115S	Elastic Pin	1	304	304
116S	Elastic Pin	1	304	304
117S	Control Handle	1	304	316
118	Roller	1	Plastic	Plastic
119S	Elastic Pin	1	304	304
120S				
121S	Pull Board	1	304	316
122S	Pin	1	304	316



LIST of FORK FRAME

No.	Description	Qty.	Material Make-Up	
			Type 304	Type 316
201S	Fork Frame	1	304	316
202S	Elastic Pin	1	304	304
203S	Rock - Arm	1	304	316
204S	Bushing	2	304	304
205S	Shaft	2	304	316
206S	Bushing	2	304	304
207S	Bushing	2	304	304
208S	Retaining Ring	2	304	304
209S	Joint	2	304	316
210S	Pin	2	304	316
211S	Nut	2	304	316
212S	Pushing Rod	2	304	316
213S	Retaining Ring	2	304	304
214S	Shaft	1	304	316
215S	Bushing	4	304	304
216S	Shaft	2	304	316
217S	Intermediate Roller	4	Plastic	Plastic
218	Extending Roller	2	Plastic	Plastic
219S	Elastic Pin	2	304	304
220S	Elastic Pin	4	304	304
221S	Shaft	2	304	316
222S	Frame of Roller	2	304	316
223S*	Shaft	4	304	316
224S*				
225S	Washer	8 or 4	304	316
226S	Bearing	8 or 4	304	304
227S*	Loading Roller	4	Nylon	Nylon
228S-N*	Link plate	4	304	316
229S-N*	Shaft for roller	4	304	304
230S	Elastic Pin	12 or 2	304	304
231S	Bolt	2	304	316
232	Enter Roller	2	Plastic	Plastic
233S	Locking Nut	2	304	304
234S#	Loading Roller	2	Nylon	Nylon
235S#	Shaft for Roller	2	304	316
236S	Washer	2	304	316
237S	Grease Cup	1	304	304
238S	Grease Cup	8	304	304
239S	Bushing	4	304	304
240S	Grease Cup	2	304	304

NOTE: * For double wheel;# For single wheel



LIST of HYDRAULIC PUMP

No.	Description	Qty.	Material Make-Up	
			Type 304	Type 316
301S	Spring Cap	1	304	304
302S	Spring	1	304	316
303	Pump Piston	1	Steel	Steel
304	Dust Ring	1	PU	PU
305	Seal	1	PU	PU
306	Dust Cover	2	Plastic	Plastic
307S	Locking Ring	2	304	304
308S	Washer	2	304	316
309S	Bearing	4	304	304
310	Loading Wheel	2	Nylon	Nylon
311S	Elastic Pin	1	304	304
312S	Elastic Pin	2	304	304
313S	Thrust Plate	1	304	316
314S	Retaining Ring	1	304	304
315S	Bearing	1	304	304
316S	Shaft of loading Wheel	1	304	316
317S	Nut	1	304	316
318S	Screw	1	304	316
319S	Lever Plate	1	304	316
320S	Elastic Pin	1	304	304
321	Valve Cartridge	1	Kits	Kits
322S	Pump Body	1	304	316
323	Seal Washer	1	Rubber	Rubber
324S	Screw Plug	1	304	316
325	Seal	1	Pu	PU
326	O - Ring	1	Rubber	Rubber
327	Dust Ring	1	PU	PU
328	Piston Rod	1	Steel	Steel
329	Steel Ball	1	304	304
330S	Screw Plug	1	304	316
331	O - Ring	1	Rubber	Rubber
332S	Bolt	1	304	316
333	Spring	1	Steel	Steel
334	Spindle of Safety Valve	1	Steel	Steel
335S	Grease Cup	1	304	304
336S	Cylinder	1	304	316
337S	Cover of Bearing	1	304	316
338S	Grease Cup	2	304	304