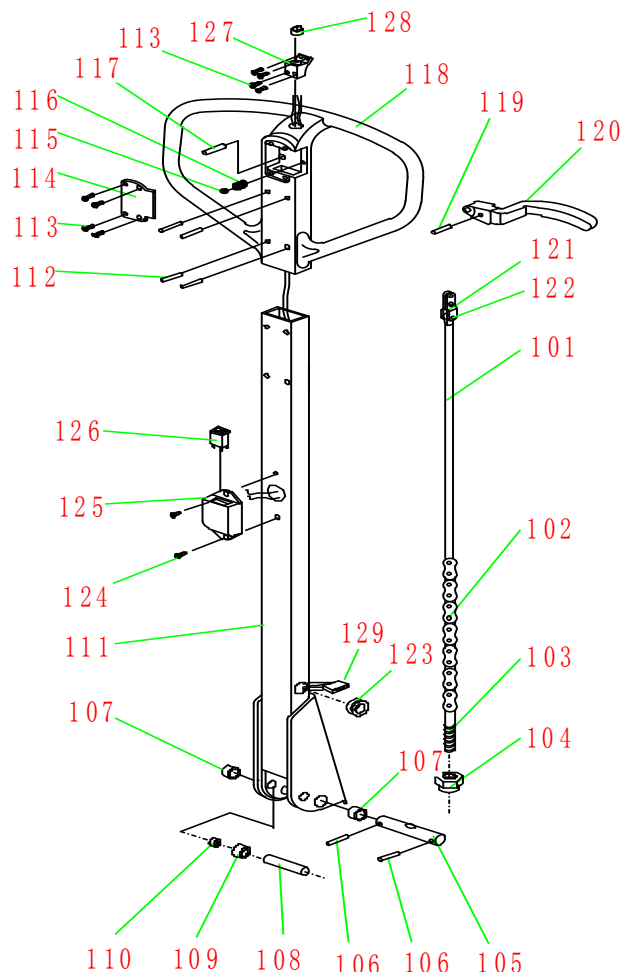


Spare parts list

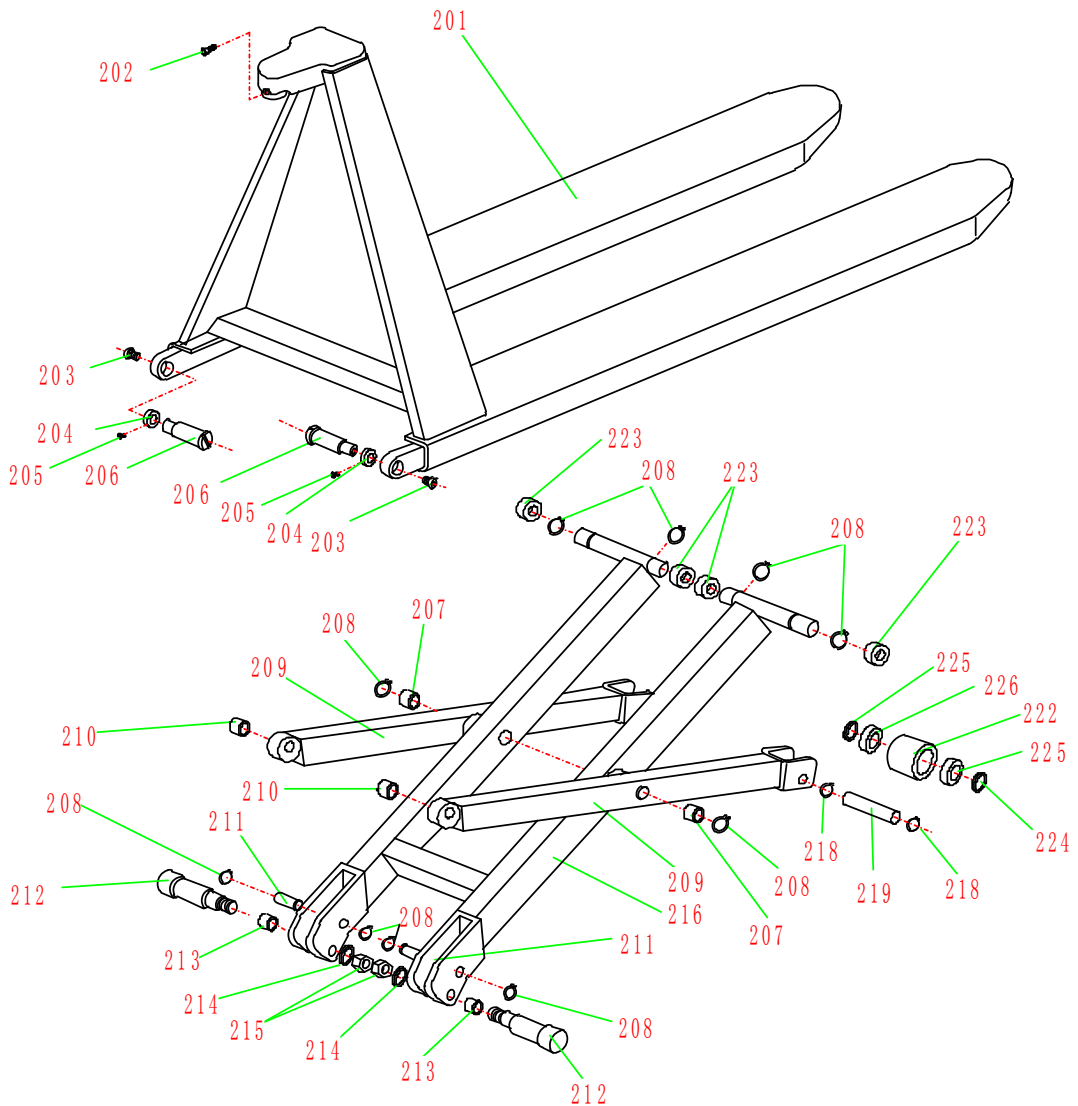


LIST of DRAW-BAR

No.	Description	Qty	No.	Description	Qty
101	Release Rod	1	116	Spring	1
102	Chain	1	117	Pin	1
103	Adjusting Bolt	1	118	Handle	1
104	Adjusting Nut	1	119	Pin	1
105	Axle with Hole	1	120	Controlling Handle	1
106	Elastic Pin	2	121	Pull Board	1
107	Bushing	2	122	Pin	1
108	Roller Pin	1	123	Rubber band	1
109	Pressure Roller	1	124	Screw	2
110	Bushing	1	125	Socket of switch	1
111	Draw - bar	1	126	Switch	1
112	Pin	4	127	Socket of button	1
113	Screw	4	128	Button	1

Electric high-lift pallet truck

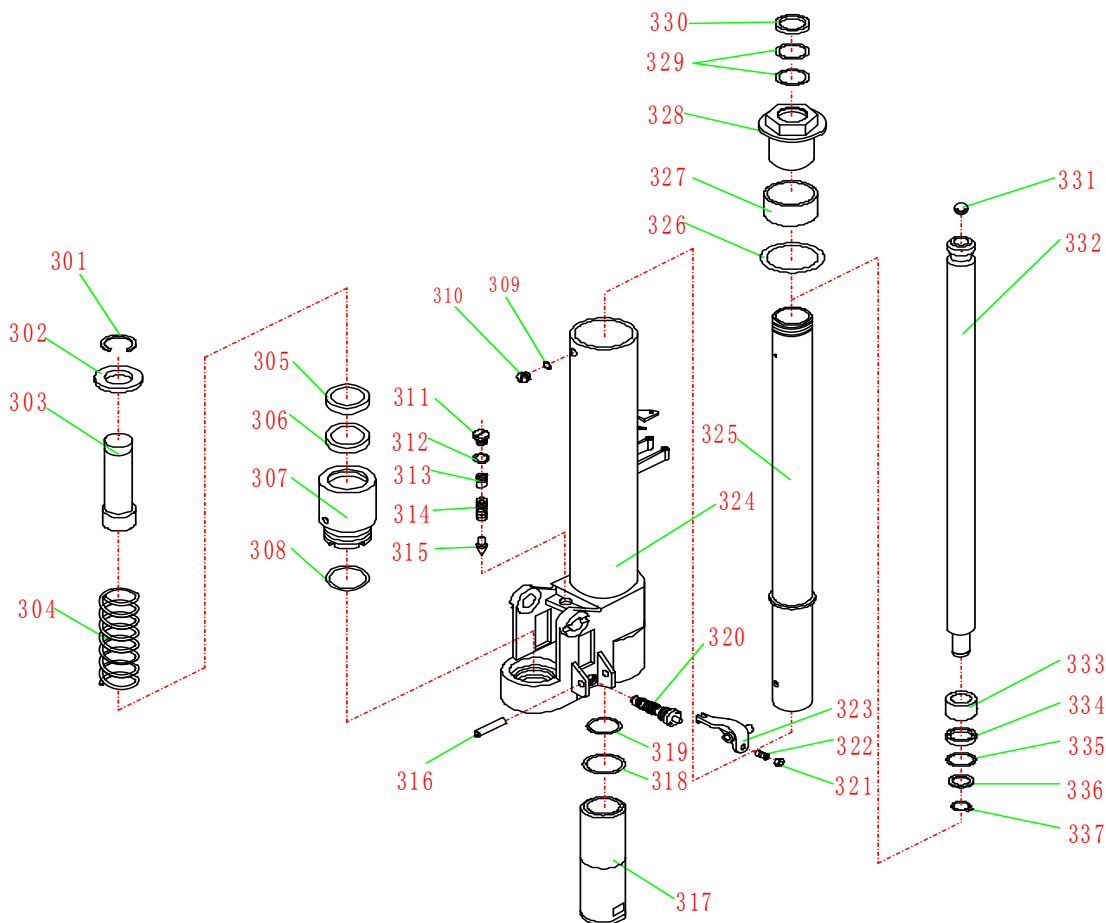
114	Cover	1	129	Connector plug	1
115	Ball	1			



LIST of FRAME

No.	Description	Qty	No.	Description	Qty
201	Fork Frame	1	214	Elastomeric gasket	
202	Bolt	1	215	Nut	2
203	Screw	2	216	Inner Leg	1
204	Gasket	2	217		
205	Screw	2	218	Elastic collar	4
206	Pin	2	219	Shaft of Roller	2
207	Bushing	2	220		
208	Elastic collar	10	221		
209	Left Leg	2	222	Roller	2
210	Bushing	2	223	Steel Roller	4
211	Pin	2	224	Gasket	4
212	Centrifugal Axle	2	225	Bearing	4

213	Bushing	2		
-----	---------	---	--	--

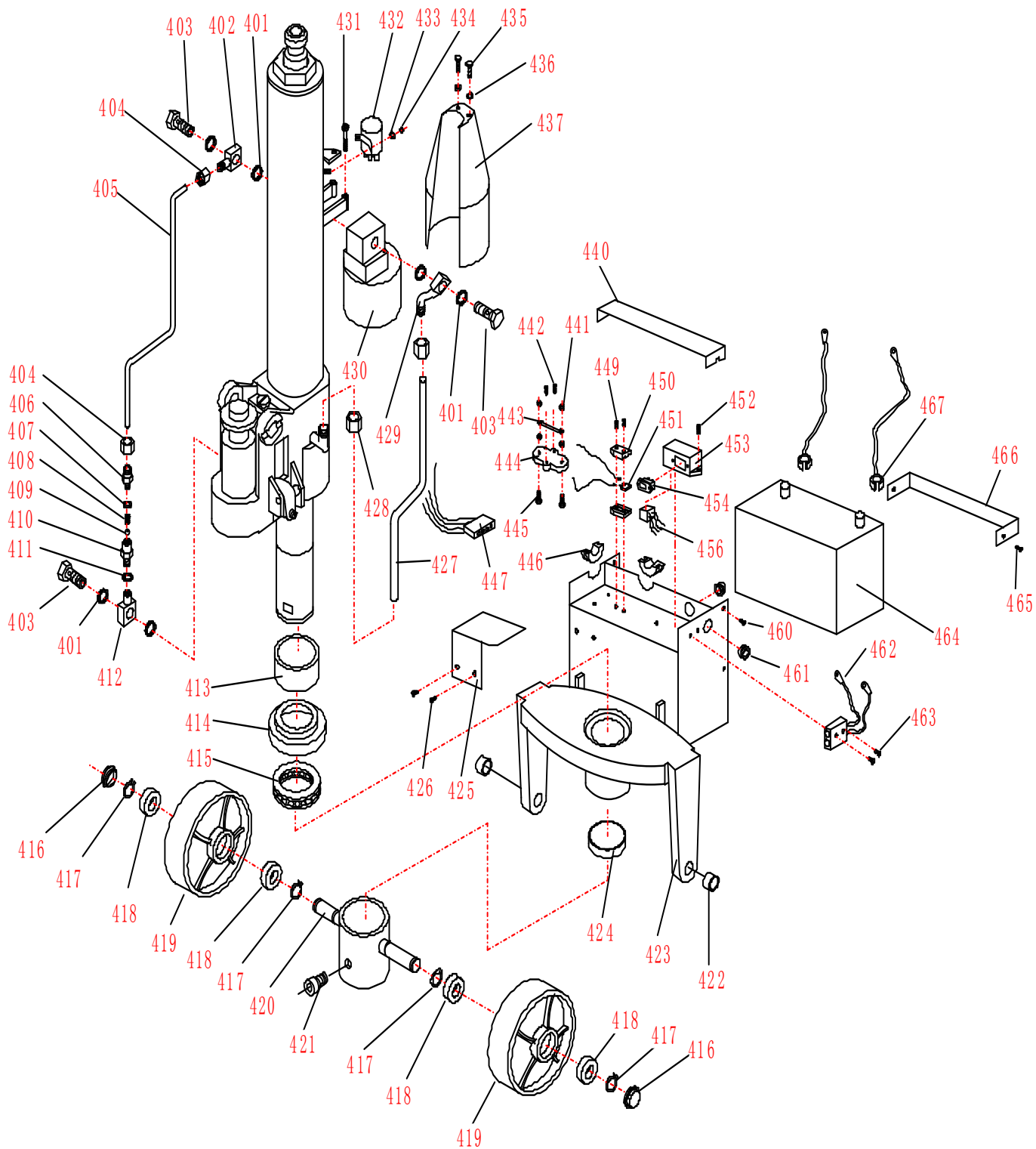


LIST OF PUMP

No.	Description	Qty	No.	Description	Qty
301	Locking Ring	1	320	Valve Cartridge	1
302	Gasket for Spring	1	321	Nut	1
303	Piston	1	322	Screw	1
304	Spring	1	323	Lever Plate	1
305	Dust Ring	1	324	Pump Body	1
306	Y - Ring	1	325	Cylinder	1
307	Pump Cylinder	1	326	Seal Gasket	1
308	O - Ring	1	327	Bushing	1
309	Seal Gasket	1	328	Screw Cover	1
310	Screw Plug	1	329	O - Ring	1
311	Screw Plug	1	330	Dust Ring	1
312	O - Ring	1	331	Steel Ball	1
313	Adjusting Bolt	1	332	Piston Rod	1
314	Spring	1	333	Piston	1
315	Spindle of Safety Valve	1	334	Cup Packing	1
316	Elastic Pin	1	335	O - Ring	1
317	Lower Cylinder	1	336	Gasket	1

Electric high-lift pallet truck

318	O - Ring	1	337	Elastic collar	1
319	O - Ring	1			



LIST OF FRAME

No.	Description	Qty	No.	Description	Qty
401	Seal Gasket	6	435	Screw	2
402	Connector	1	436	Gasket	2
403	Bolt	3	437	Motor Cover	1
404	Nut	2	438		
405	Oil Pipe	1	439		
406	Carve Tie-in	1	440	Battery Cover	1
407	Seal Gasket	1	441	Nut	4
408	Spring	1	442	Screw	2
409	Steel Ball	1	443	Fuse	1
410	Seat of Valve	1	444	Fuse Carrier	1
411	Seal Gasket	1	445	Bolt	2
412	Connector	1	446	Rubber band	2
413	Bushing	1	447	Connector plug	1
414	Seat of Bearing	1	448		
415	Bearing	1	449	Screw	2
416	Dust Cover	2	450	Fuse Carrier	2
417	Elastic collar	4	451	Fuse	1
418	Bearing	4	452	Screw	2
419	Wheel	4	453	Seat of Voltage Meter	1
420	Holding Site for Wheel	1	454	Voltage Meter	1
421	Bolt	1	455		
422	Bushing	2	456	Circuit Module	1
423	Thrust Plate	1	457		
424	Bushing	1	458		
425	Cover	1	459		
426	Screw	2	460	Screw	2
427	Oil Pipe	1	461	Rubber band	2
428	Nut	2	462	Socket	1
429	Connector	1	463	Screw	2
430	Motor Assembly	1	464	Battery	1
431	Bolt	2	465	Screw	2
432	Electromagnetic Switch	1	466	Baffle	1
433	Gasket	2	467	Battery Wires	2
434	NUt	2			