

# SF SERIES FIXED TYPE SKATES

Shifting skates are used for moving heavy objects. The load should be lifted using either a roller crowbar, jack or similar - so that the skates can be safely positioned under the object. These fixed type skates also have a rubber surface that helps to both grip and protect the object being moved.

The SF range has 5 different models, which vary in size and capacity.

Model	Capacity	Length (mm)	Width (mm)	Height (mm)	No. of Rollers	Weight (kg)
SF10	1 tonne	400	220	115	4	6
SF20	2 tonne	400	220	115	8	7
SF25	2.5 tonne	275	110	100	2	4.5
SF30	3 tonne	400	220	100	4	8.5
SF60	6 tonne	415	200	100	6	11.5



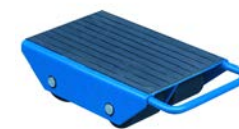
SF10



SF20



SF25



SF30



SF60

